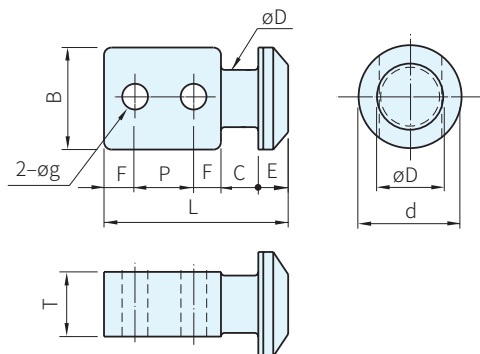


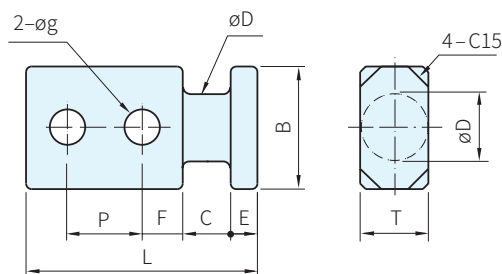


材質
SS41

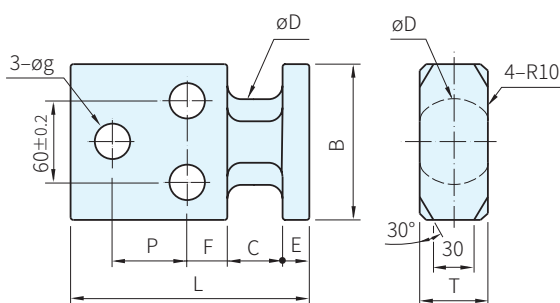
CHPP10~40



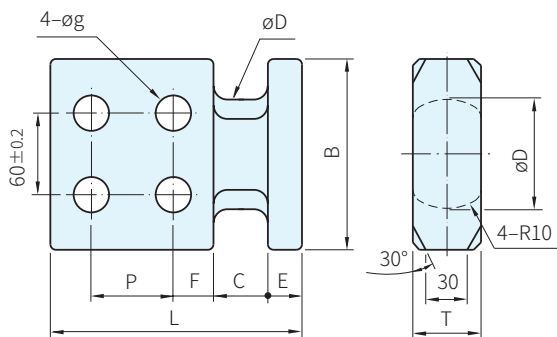
CHPP50



CHPP63



CHPP80



10倍的安全係數

品號		D	d	B	T -0.5 -1.0	L	C	E	F	P ±0.2	g	容許荷重 (N)	庫存
Type	øD												
CHPP	10	10	28	28	18	50	10	8	8	16	7	1569	•
	12	12	32	32	20	56			10	18	9	3530	•
	16	16	36	36	24	67			13	12	11	4511	•
	20	20	40	40	26	88	18	10	15	30	14	5492	•
	25	25	48	48	35	92	20	12	20	40	18	6570	•
	32	32	55	55	40	118	25	13	24	45	22	12160	•
	40	40	70	70	50	138	30	15	24	45	22	19123	•
	50	49	-	90		170	35	20	30	55	26	27459	•
	63	63	-	115		175	40					39227	•
80	80	-	140	185	40	25	60	50995	•				

螺牙部長度	品號	庫存
	Type M-L	(M24×P3)
全牙	CBB24-80	•
	CBB24-90	•
60	CBB24-100	•
	CBB24-110	•
	CBB24-120	•
	CBB24-120	•

注意

- CHPP50、63、80裝配螺絲(強度10.9)
- 吊索方向請與鎖緊螺絲同一方向
- 1N=0.101972kgf

訂貨：品號 交期：1 天
CHPP10

